

# Full Feature License

## Download Software

[Download Modbus Client \(Latest Version\)](#)

## Purchase License

[Purchase a license from Bipom Electronics](#)

## Upload License/Serial Number to Unlock Features

Get the license / serial number via email:

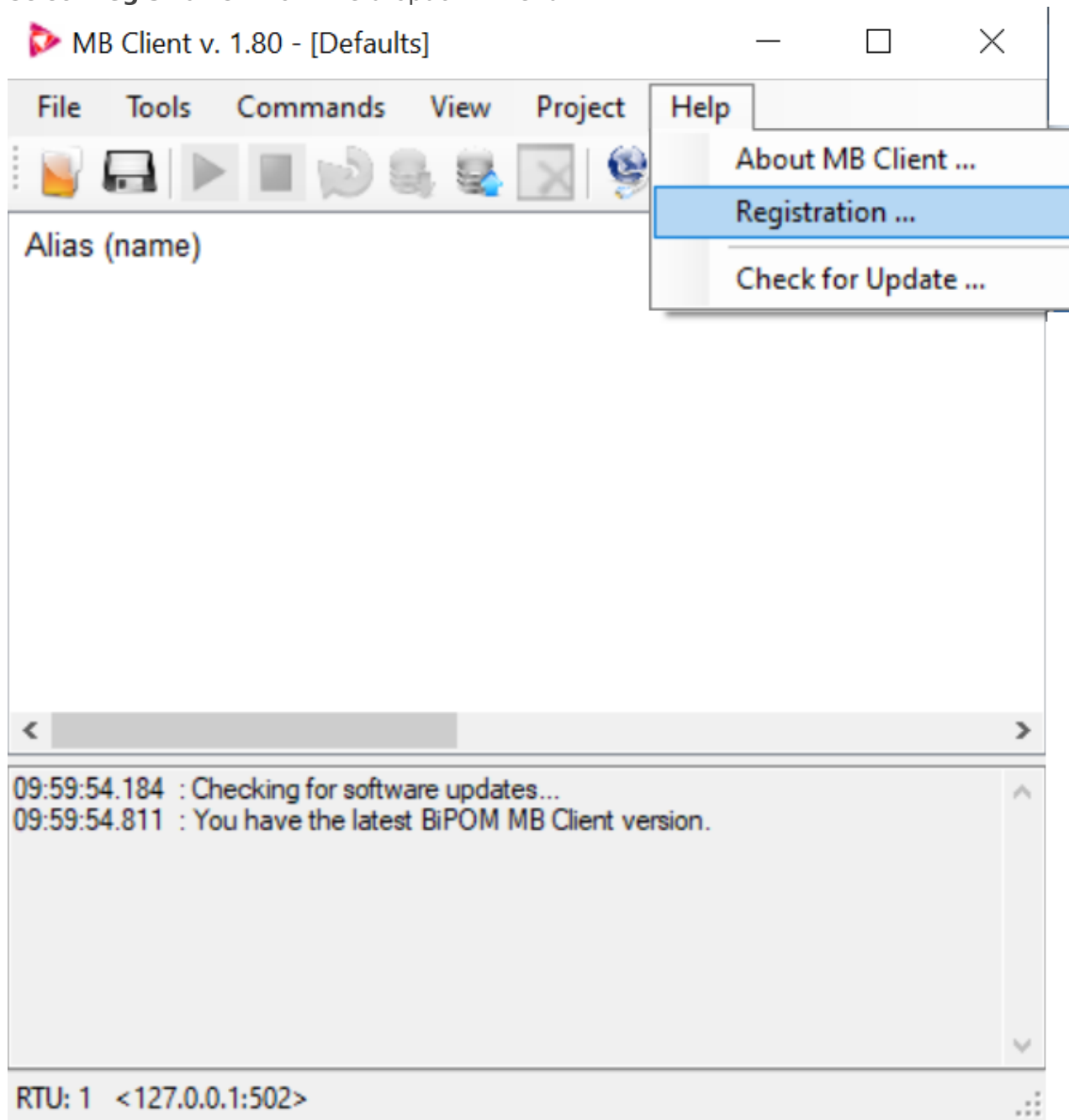
When you purchase a license, you should get emailed an alphanumeric serial number (license #) in the following format:

**12A3BC45-XXXXXXXX-XXXXXXXX-XXXXXXXX-XXXXXXXX-XXXXXXXX-12A3BC45**

## Unlock a modbus client instance

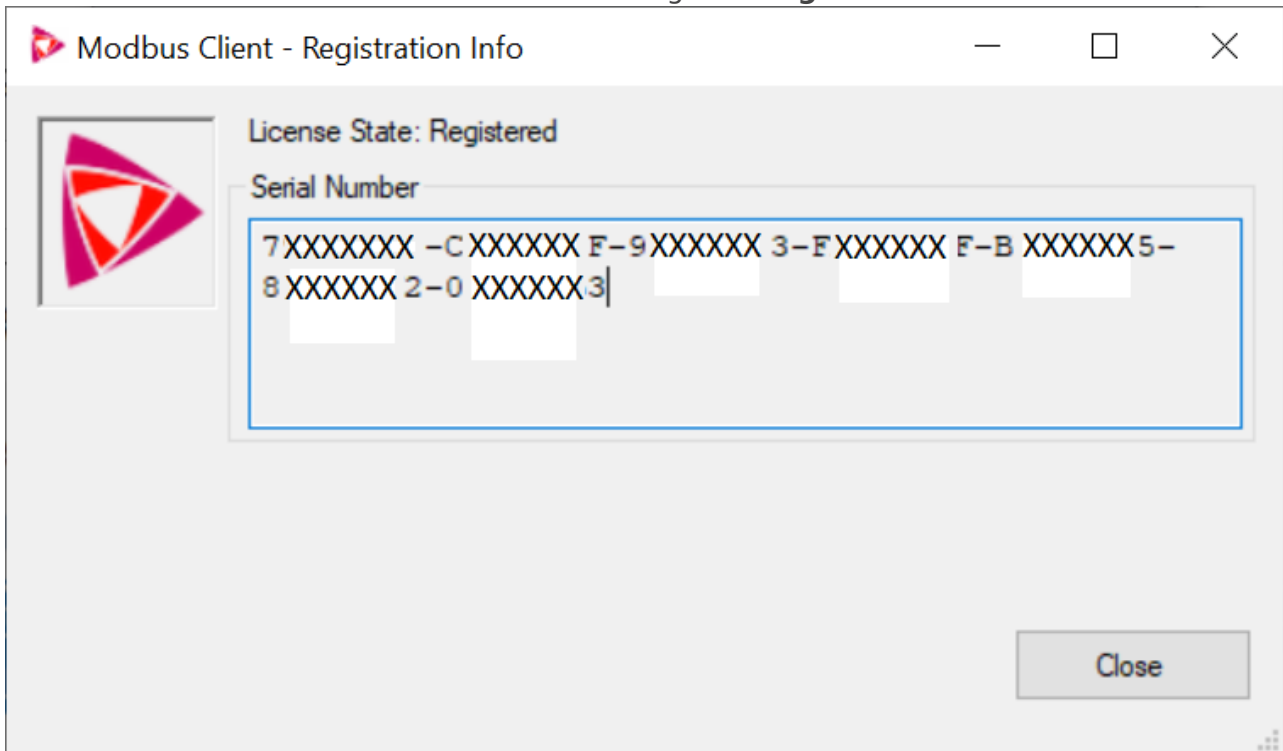
1. Open Modbus Client Program
2. Select the **Help** Tab

3. Select **Registration** from the dropdown menu.



4. Enter the license/serial number.

5. You should see the **License State** status change to: **Registered**



6. At this point you should be able to use as many registers as you would like for polling purposes.

---

Revision #2

Created 19 May 2022 15:37:46 by Bach\_L

Updated 26 May 2022 05:29:45 by Bach\_L